

WR-6412 TWO-WAY WEATHER RESISTANT LOUDSPEAKER SYSTEM



- >> Two-way vented weather resistant loudspeaker system
- >> 12" cone speaker
- >> 3" compression driver with constant directivity horn
- >> 400 W RMS power handling
- >> Stainless steel screws and grille

The D.A.S. WR-6412 is a two-way vented loudspeaker system for applications covering speech reinforcement, program reproduction and live music productions specially designed to be used outdoors due to its specific treatments against dust, water and humidity.

The Low Mid range utilizes a high efficiency 12" low frequency speaker with 3" voice coil. The High end makes use of a 1.5" exit compression driver with 3" titanium diaphragm coupled to a rotatable 60° x 40° constant directivity horn.

The enclosure is manufactured from Birch Plywood and it can be ordered in two different special finishings; CX consists of Polyurea paint which is intended for covered areas and DX which consists of a fiberglass finish intended for non covered areas (system directly exposed to weather conditions). The trapezoidal enclosure has 15° side angles for easier rigging.

The unit has a robust stainless steel grille design specially covered with foam and a hydrophobic cloth to prevent and protect the loudspeaker components. The covering is resistant to wear and tear and provides protection from dust and dirt as well.

14 integrated rigging points that accept 10M forged steel eyebolts make suspension in either the horizontal or vertical positions safe and simple. The D.A.S. WR-6412 can be also installed using its specific stainless steel U-bracket AXU-WR12.

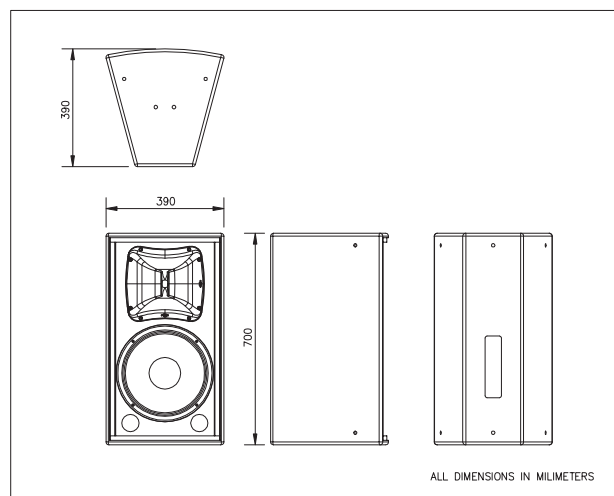
The back connection panel uses covered barrier strip terminals and is protected by a stainless steel junction box.

Intended for Auditoriums, Theaters, Worship Centres, Sports Facilities, Live Clubs, Themed Entertainment Venues or Public Buildings and Schools.

Technical Specifications

RMS (Average) Power Handling ^a :	400 W
Program Power Handling ^b :	800 W
Peak Power Handling ^c :	1600 W
On-axis Frequency Range:	60 Hz - 20 kHz
Nominal Impedance:	8 Ohm
Minimun Impedance:	8.2 Ohm at 153 Hz
On-axis Sensitivity, 1w/1m:	98 dB SPL
Rated Peak SPL at Full Power:	130 dB SPL
Nominal -6dB Beamwidths:	60° Horizontal x 40° Vertical
Enclosure Material:	Birch Plywood
Color/Finish:	Black or White
Transducers/Replacement Parts:	LF: 12AV/12P HF: M-75/GM M-75
Weather Resistant Level:	Covered Exposure (CX) Direct Exposure (DX)
Connector:	Covered Barrier Strip
Dimensions (H x W x D):	70 x 39 x 39 cm 27.6 x 10.4 x 10.4 in
Weight:	24 kg (52.8 lb)
Accessories:	AXU-WR12

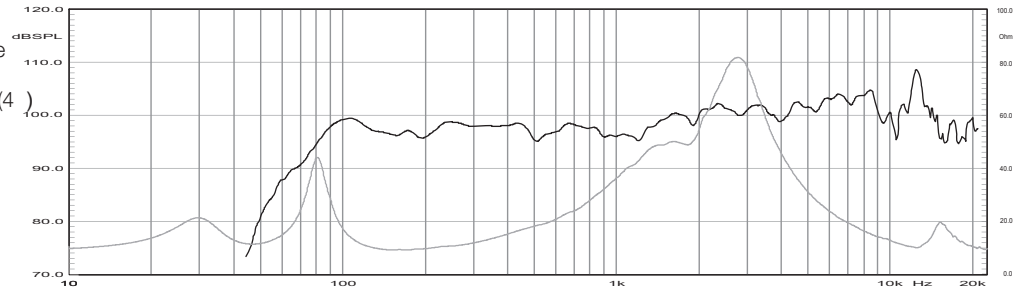
Dimensions



^a Based on a 2 hour test using a 6dB crest factor pink noise signal.
^b Conventionally, 3dB higher than the RMS measure, although this already utilizes a program signal.
^c Corresponds to the signal crests for the test described in ^a.

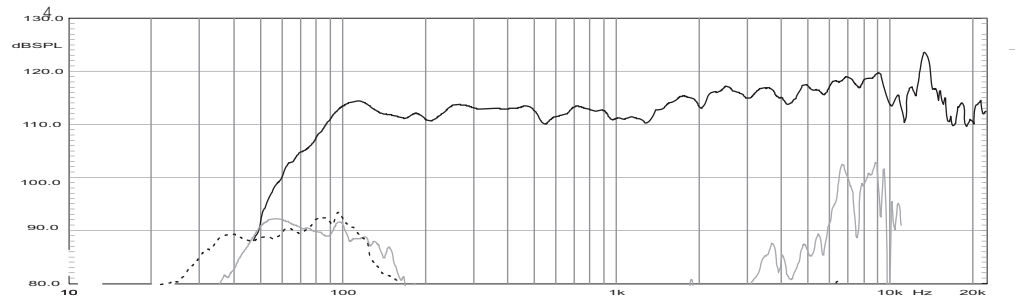
Frequency Response

Shows the frequency response at 1 m of a unit radiating to an anechoic environment (4) and driven by a 1 W (2.83 V) swept sine signal, and impedance curve. For better detail, only light smoothing (1/12th octave) has been used.



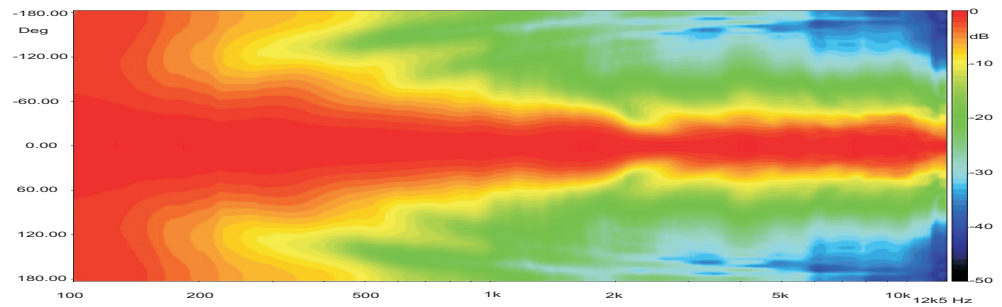
Distortion

Shows the second Harmonic Distortion (grey) and Third Harmonic Distortion (dotted) curves for a unit driven at 10% of its nominal power handling rating.



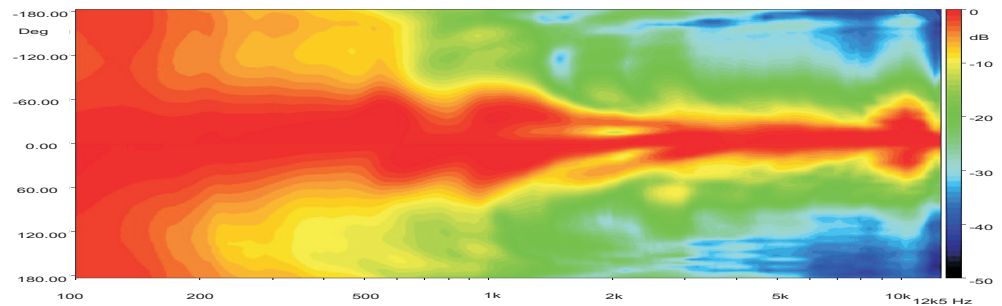
Directivity

Shows normalized horizontal isobar plot.



Directivity

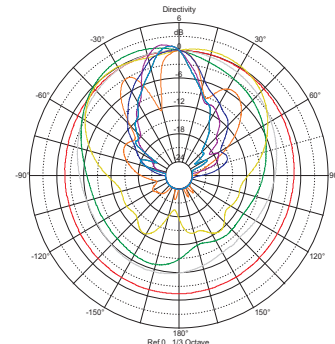
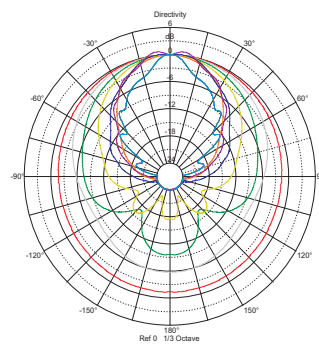
Shows normalized vertical isobar plot.



Polar Response

Shows 1/3 octave band horizontal (left) and vertical (right) polars for the indicated frequencies. Full scale is 30dB, 6dB per division.

125Hz
500Hz
1000Hz
2000Hz
4000Hz
8000Hz
12500Hz



NOTES: Frequency response measured at 4m (13.12ft) and referred to 1m. For better detail, only light smoothing (1/12th octave) has been used. Polars were acquired by placing the unit on a computer controlled turntable inside a 300 m³ (10594 ft³) anechoic chamber. Measurement distance is 4m (13.12ft).

Product improvement through research and development is a continuous process at D.A.S. Audio. All specifications subject to change without notice.



D.A.S. Audio S.A.
C/ Islas Baleares, 24
46988 Fuente del Jarro
Valencia - SPAIN
Tel. 961 340 525 - Tel. Intl. +34 961 340 860
Fax 961 340 607 - Fax Intl. +34 961 340 607

D.A.S. Audio of America Inc.
Sunset Palmetto Park - 6816 NW 77th Court
Miami, FL 33166 U.S.A.
Tel. 305 436 0521 - Fax. 305 436 0528
Toll Free: 1 888 DAS 4 USA

D.A.S. Audio Asia Pte. Ltd.
25 Kaki Bukit Crescent # 01-00/ 02-00
Kaki Bukit Techpark I - Singapore 416256
Co. Reg. No. 200704134E
Tel. +65 6742 0151 - Fax. +65 6742 0157

www.dasaudio.com