

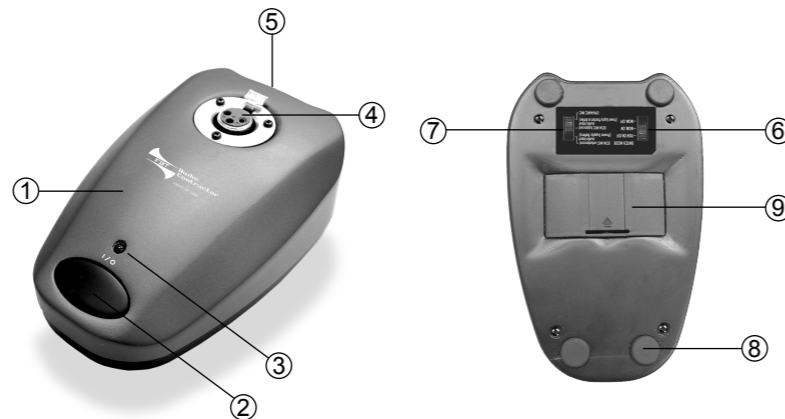
FBTAC ST-5050 UNIVERSAL GOOSENECK MICROPHONE BASE

Feature

- The stylish metal case with quick mount socket
- Programmable switch can be set as Push On / Push Off, Push To Talk and Push To Mute.
- Special anti-slip pad ensures firm standing and less bounced noise from desk.
- Microphone selecting switch is designed for optimum miking effect.
- Available for all kinds of condenser and dynamic gooseneck microphones

Parts Identification

- ① Stand Base
- ② On / Off Switch
- ③ Power On/Off LED Indicator
- ④ Audio Input Socket (3P XLR, Female)
- ⑤ Audio Output Socket (3P XLR, Male)
- ⑥ Microphone Selecting Switch
- ⑦ Switching Mode Selector
- ⑧ Rubber Pad
- ⑨ Battery Compartment



Use Instruction

Installation

- (1) Plug the microphone onto the audio input socket.
- (2) Connect the audio output socket to a mixer or amplifier with an audio cable. (Figure 1)

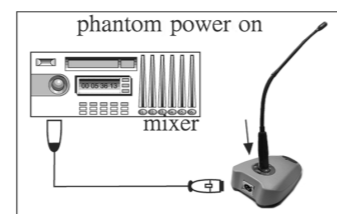


Figure 1

Microphone Type

The stand base is available for both the condenser and dynamic gooseneck microphones. Switch to the correct position according to the microphone type. (Figure 2)

* Condenser Gooseneck Microphones:

For the condenser microphones, it can be powered by either phantom power 9V to 52V or battery power 9V.

* Dynamic Gooseneck Microphones:

While the dynamic microphone is applied, please insert the 9V battery in order to activate the On / Off Switch.

Note : Always power the ST-5050 by either phantom power 9V to 52V or battery power 9V in order to ensure all functions effective.

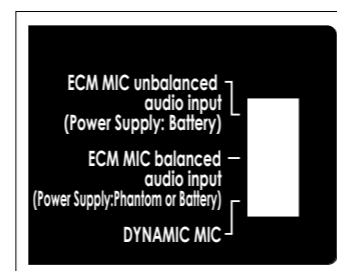


Figure 2

Switching Mode Selecting

There are three operating modes, which can be selected on the bottom of the stand base, Push On / Push Off, Momentary On and Momentary Off. (Figure 3)

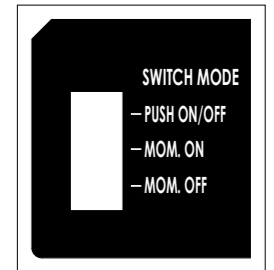


Figure 3

* Push On / Push Off:

Switch to "PUSH ON/OFF" mode. Press the On / Off Switch to talk and press again to mute.

* Momentary On:

Switch to "MOM. ON" mode. Microphone is ON only while the On / Off Switch is being pressed. (Push to Talk)

* Momentary Off:

Switch to "MOM. OFF" mode. Microphone is OFF only while the On / Off Switch is being pressed. (Push to Mute)

LED Indicator

LED indicator shows the On/Off status . When the LED lights up, the microphone is ON to talk and the power supply is normal.

Specification

Frequency Response: 20 to 20,000 Hz

Power Requirement: Phantom power 9V~52V or battery power 9V

Current Consumption-Stand by: 1 mA

Current Consumption-Operating: 2.07 mA (BAL), 1.34 mA (UNBAL)

Switches: * Push control: on / off

* Microphone selection: ECM MIC unbalanced input, ECM MIC balanced input, Dynamic MIC input

* Switching Mode Selector: push on / push off, momentary on, momentary off

Connector: Unbalanced and balanced audio input (3P XLR, Female)

Unbalanced and balanced audio output (3P XLR, Male)

Net Weight: 0.82 kg

Dimension (m/m)

